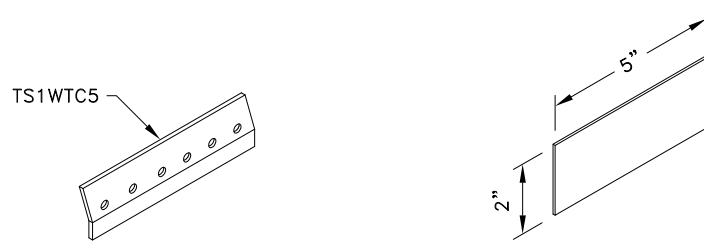
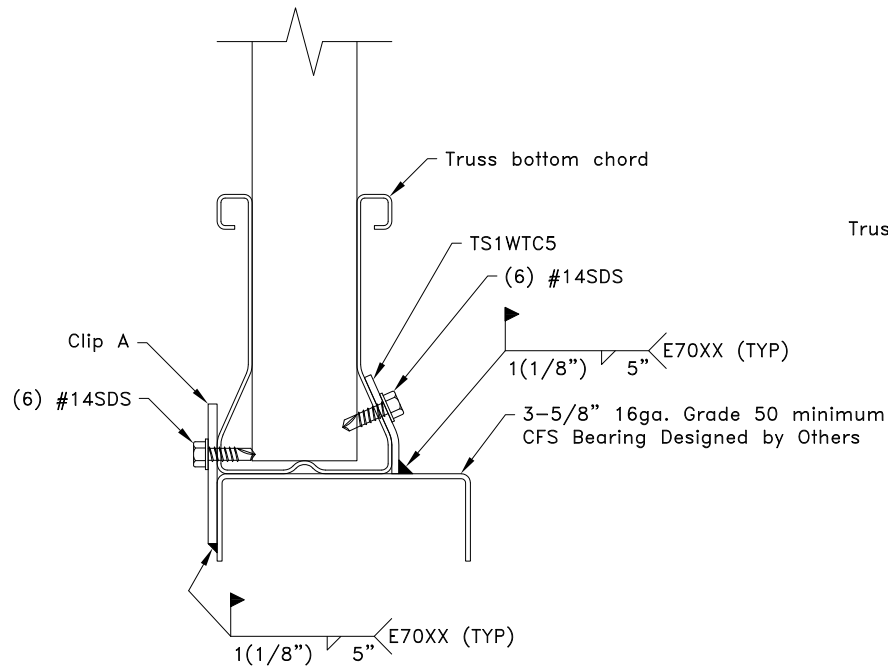


Maximum Connection Values

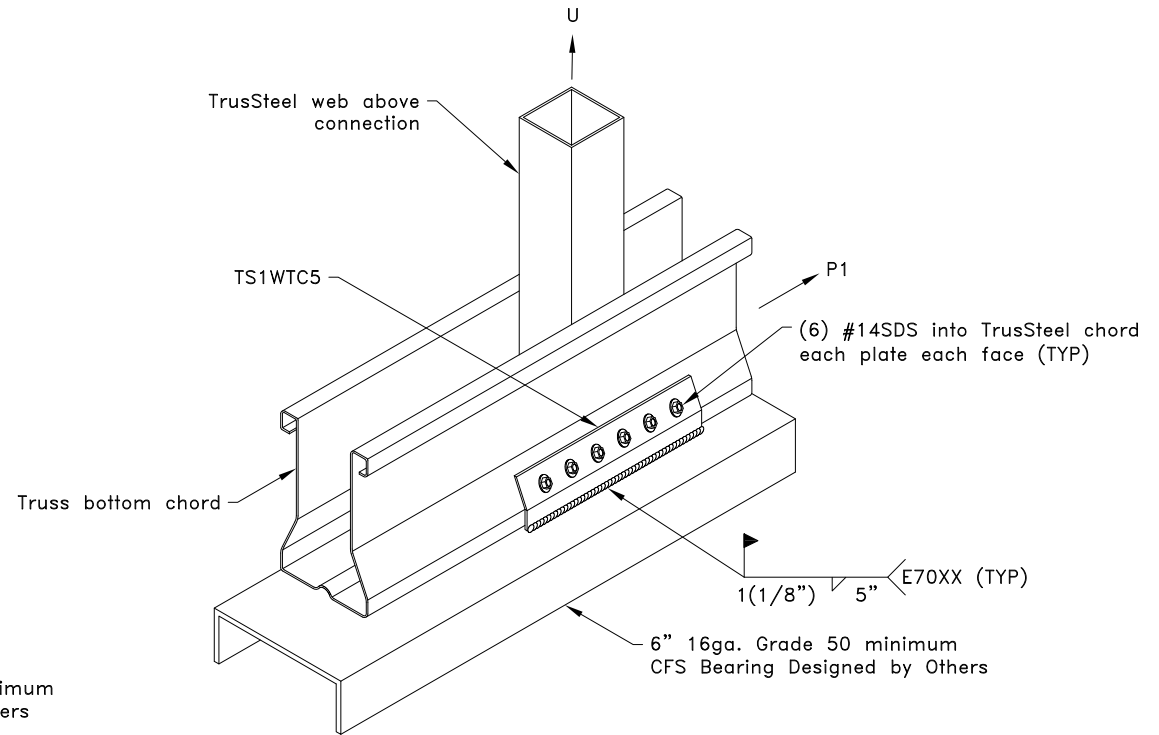
(U and P₁ NOT in combination)

Chord	U	P ₁
43TSC	5230	5230
54TSC	7355	7355



TS1WTC5 is 10g
Bare metal thickness = 0.128"

Clip A
10g ASTM A653 SS Grade 33 G60
Bare metal thickness: $t = 0.128$ "



General Notes:

1. SDS = Self-Drilling Tapping Screw
2. Clips must be positioned so that they are centered at web as shown.
3. Connection of top plate to wall stud must be capable of transferring truss uplift load from wall top plate to wall stud.
4. P₁ refers to In-Plane lateral load and U refers to Uplift.
5. The wall top plate is to be designed by the job engineer. The wall top plate must be designed to support the loads applied to it (downward, upward and lateral).
6. Refer to TrusSteel Technical Bulletin 98.10.05 titled "Repair of Galvanized Surfaces" to restore corrosion resistant properties of the connection after welding.
7. Weld values based on the use of an electrode type E70XX.
8. For allowable load combinations, contact a TrusSteel Engineer.
7. Cold-Formed Steel Calculations are per the 2010 addendum to the AISI 2007 "North American Specifications for the Design of Cold-Formed Steel Structural Members" (S100-07/S2-10).



www.TrusSteel.com

Florida: 2400 Lake Orange Drive, Suite 150 / Orlando, FL 32837 / (800) 755-6001
Missouri: 13723 Riverport Drive, Suite 200 / Maryland Heights, MO 63043 / (800) 326-4102

Welded Truss Clip to Cold-Formed Steel

Alpine, a division of ITW Building Components Group, Inc. shall not be responsible for any performance failure in a connection due to a deviation from this detail. Any variation from this detail shall be approved in advance by Alpine, a division of ITW Building Components Group, Inc.

Custom Detail:

CD150705

Date:

07/30/15

Custom Detail Category:

Truss-to-Bearing Connection